

# Using water at home

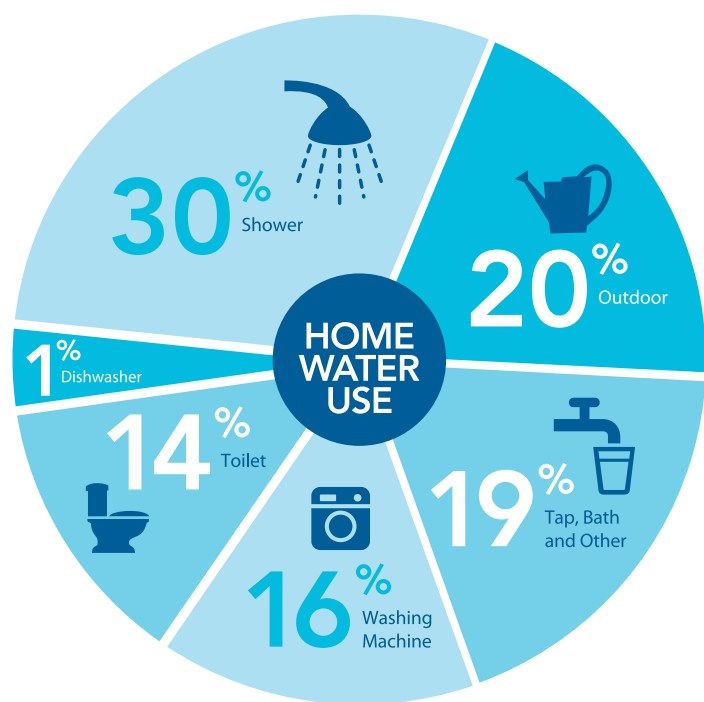
We use water in many ways in our day-to-day lives. Common household activities such as drinking, washing and watering all rely on water.



## How we use water in the home

### Breakdown of home water use

On average, each of us uses 147 litres of water per day, equal to 53,000 litres a year.



## How can we reduce our water use?

**There are simple things we can do to use less water.**

We know that small changes can make a big difference. The average yearly water use for each person living in Melbourne's south east is 30 per cent (a whopping 22,600 litres) less than five years ago.

## Water saving tips!

### Fix

Fix a dripping tap (which can be as easy as changing the washer).

Save up to 20,000L a year<sup>^</sup>

### Water

Water your garden during cooler hours (early morning or late evening) – this reduces evaporation, giving the water a greater chance of reaching the roots.

### Install

Install a dual flush toilet. Visit [dualflush.com.au/sew](http://dualflush.com.au/sew).

Save up to 35,000L a year<sup>^</sup>

### Wash

Wash your vegetables in a bowl rather than under a running tap.

### Consider

Consider a front loader instead of a top loader when purchasing a washing machine.

Save up to 20,000L a year<sup>^</sup>

### Exchange


Exchange your showerhead for a water efficient model for free. See [southeastwater.com.au/products](http://southeastwater.com.au/products) for more information.


Save up to 20,000L a year<sup>^</sup>


<sup>^</sup> per household


# How much water do you use?

The following information can help you to get a rough idea of how much water you or your household uses. It can also identify ways you can use water more efficiently.

Bathroom 	Per (unit)	Litres
<b>Basin</b>		
• Running tap	Minute	8
<b>Shower</b>		
• Ordinary showerhead	Minute	17
• Water efficient showerhead	Minute	8
<b>Toilet</b>		
• Single flush	Flush	12
• Dual flush	Flush	8
<b>Bath</b>		
• Half full	Bath	80
• Full	Bath	140

Kitchen 	Per (unit)	Litres
<b>Washing dishes by hand</b>		
• Standard sink	Sink	18
<b>Dishwasher</b>		
• Older model	Cycle	60
• Newer model	Cycle	18

Laundry 	Per (unit)	Litres
<b>Washing machine</b>		
• Front loader	Cycle	60
• Top loader	Cycle	150
<b>Trough</b>		
• Full	Trough	80

Outdoors 	Per (unit)	Litres
<b>Watering</b>		
• Bucket or watering can	Bucket	9
• Hand-held hose/sprinkler	Minute	18
<b>Washing the car</b>		
• Trigger nozzle hose	Minute	18
• High pressure cleaning device	Minute	6

Note: All figures are based on assumptions

## Other ways we use water around the home

### Irrigation systems

Maintenance of your irrigation system is important. Find out how many days a week your system is set to. The instructions should be in the operating manual.

### Swimming pools

Pool covers and cartridge filters can save over 30,000 litres of water per year.

### Evaporative coolers

Evaporative coolers may be using more water than you think. Check filters once a year and ask a licensed plumber to check the settings on your unit.